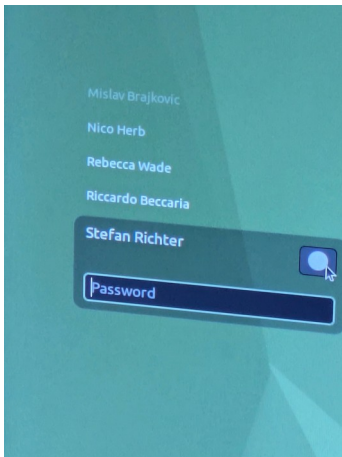
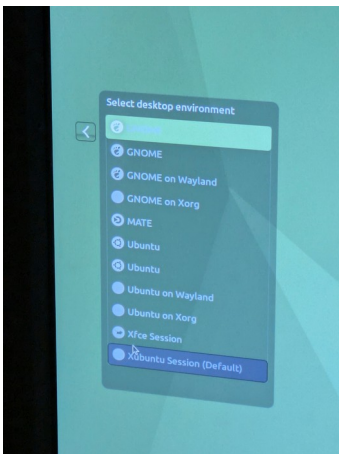


How to use the Stereo Workstation

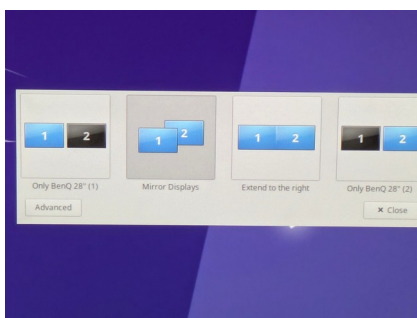
Best is to start with a fresh restart of the machine to avoid that some resources are locked by the previous user. You need to start the machine at the computer and the two screens at the locations shown on the image on the right. Wait until the computer is booted up.




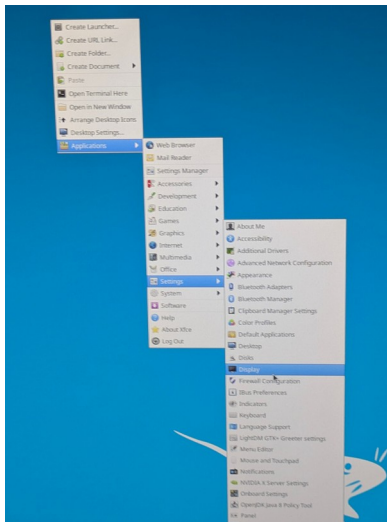
Select the XUbuntu login session



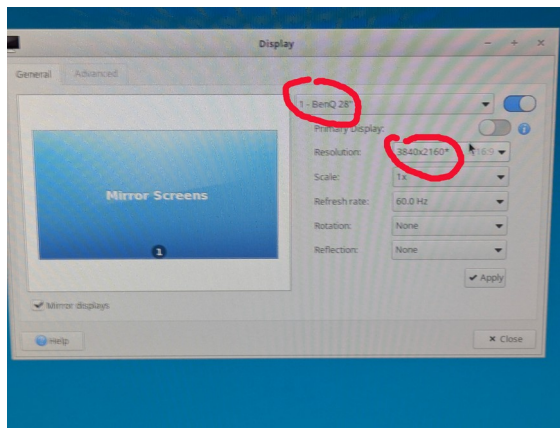
Login with session xubuntu (default) as shown on the next screenshot.



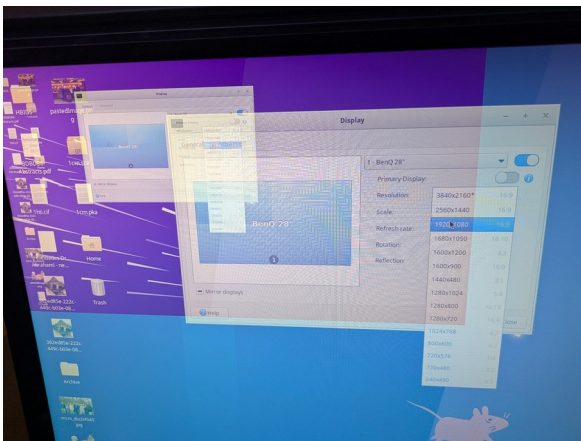
If the two monitors do not show the same image, press Window key  + P and select mirror:



In case you want to change the resolution of the screen to be able to read the text and menus better:
Select Display as show here (use the right mouse button to start the menu):



Select first one monitor and set the resolution for example to 1920x1080 instead of 3840x2160. Press Apply



You will see two resolutions at the same time. Select the second monitor and do the same. If the Apply Window is outside of the screen, simply press enter.

If you use Pymol, you need to start it with
`pymol -S`
in the terminal.